

eclipse[®] LD

Actual thermal image shown



Large
3.5"
Display

High Performance in a Compact Design

Eclipse LD combines the compact, sleek Eclipse design with powerful performance on a large-sized display. Infused with a state-of-the-art thermal imaging engine and the latest Liquid Crystal Display technology, Eclipse LD shines in the harshest, darkest environments. With Eclipse LD, you'll lose the bulk without missing a thing.

PERFORMANCE Meets Lightweight

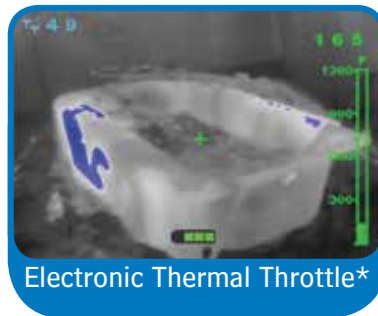
Packing a 320 x 240 ultra-high resolution infrared engine in a two-pound package, Eclipse LD provides fire departments a "no compromises" thermal imager. Eclipse LD fulfills the promise of a personal-issue thermal imager while thriving as a complete analytical tool.

UPGRADABLE Resolution

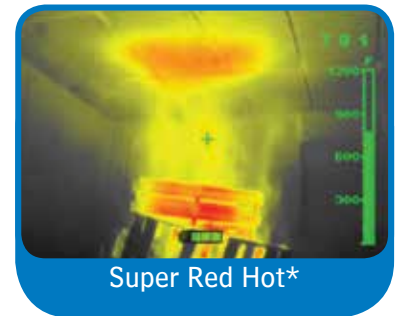
The Eclipse LD comes standard with a 160 x 120 resolution and is upgradable to a 320 x 240 resolution for the clearest, crispest thermal imaging you'll experience. Resolution upgrades are available for both new and aftermarket purchases.†

ADVANCED Features

Now on all Eclipse thermal imagers, at no extra charge, is the capability to load user customizable startup graphics. Available as options on Eclipse LD are Bullard's patented Electronic Thermal Throttle[®], enabling firefighters to optimize scenes with the touch of a button, and Super Red Hot colorization, highlighting high-heat scenes in brilliant shades of yellow, orange and red. Temperature measurement is also optional.



Electronic Thermal Throttle*



Super Red Hot*

SceneCatcher Digital Video Recorder

For the first time, Eclipse is available with an internally installed digital video recorder. The SceneCatcher DVR, an option for the Eclipse LD, records up to five hours of video in vivid high resolution.

† Upgrade requires factory service

* 320 x 240 resolution shown



All Eclipse LD Thermal Imagers ship with **myBullard™**, a personal control panel for you to register, inventory, maintain, service, and enhance your thermal imaging products and accessories. This easy-to-use software enhancement will help you organize and optimize your thermal imaging operations.

Bullard
TOUGH

 **Bullard**[®]

www.bullard.com

eclipse[®] LD

Technical Specifications

Overall TI Unit

Weight with battery	2.0 pounds
Without battery	1.75 pounds
Dimensions	Height: 4.3" Length: 7.8" Width: 5.2"
Heat Test	500°F for 5 minutes 300°F for 15 minutes
Water Resistance	IP67
Impact/Drop Test	No functional damage, 6' drop

Casing

Shell Material	Ultem [®] Thermoplastic
Sealing	Silicone and Neoprene [®]
Display Cover	Polycarbonate

Core/Detector

Type	Uncooled Microbolometer with Digital Processing, Pixel Smoothing
------	--

Resolution	160 x 120 standard (upgradable to 320 x 240)
------------	---

Sensing Material	Amorphous Silicon
Spectral Response	7-14 Microns
Thermal Stabilization	-40°F to 185°F
Update Rate	30 Hz
Temperature Sensitivity	< 0.050°C
Video Output	NTSC
NETD	< 50mK
Dynamic Range	1152°F
Pixel Pitch	17 μm
Thermal Time Constant	12ms
Video Polarity	White-Hot
Temperature Measurement (optional)	Numeric and/or bar style
Super Red Hot Colorization (optional)	Color above 500°F (250°C)
Electronic Thermal Throttle (optional)	Blue hot spot colorization

Lens

Material	Germanium
Lens Size	7.5mm
Field of View	31.5°V x 42°H
Focus	Fixed 3' to infinity
Speed	f/1.4

Electrical System

Power Source	NiMH Rechargeable Battery
Output	2.4V nominal
Capacity	1650 mAH
Operating Time	> 2.4 hours nominal
Start Up Time	< 4 seconds
Switch Cycle Test	1,000,000 cycles
Battery Weight	0.25 pounds
Recharge Time	2 hours nominal

Display

Type	Digital, Liquid Crystal Display (LCD)
Size	3.5" Diagonal TFT Active Matrix
Dot Pitch	0.219mm x 0.073mm
Dot Format	320 x RGB x 240
Pixels	76,800
Pixel Configuration	Vertical Stripes
Back Light	L.E.D.
Brightness	300 cd/m ²
Contrast	350:1
Viewing Angle	Left/Right = 60°, Up/Down = 60°/40°

SceneCatcher Digital Video Recorder (optional)

Video format	NTSC
Video file type	AVI
Video image size	640 x 480
Video record time	5 hours
Connection	USB

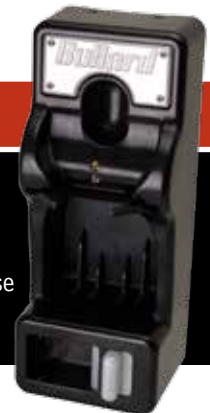


Eclipse
Retract Strap

Accessories



Eclipse Battery
Charger Base



Eclipse Powerhouse
Charger



www.buildyourbullard.com

Americas:
Bullard
 1898 Safety Way
 Cynthiana, KY 41031-9303 • USA
 Toll-free within USA: 877-BULLARD (285-5273)
 Tel: +1-859-234-6616
 Fax: +1-859-234-8987

Europe:
Bullard GmbH
 Lilienthalstrasse 12
 53424 Remagen • Germany
 Tel: +49-2642 999980
 Fax: +49-2642 9999829

Asia-Pacific:
Bullard Asia Pacific Pte. Ltd.
 LHK Building
 701, Sims Drive, #04-03
 Singapore 387383
 Tel: +65-6745-0556
 Fax: +65-6745-5176



©2013 Bullard. All rights reserved.
 Eclipse and Electronic Thermal Throttle are registered
 trademarks of Bullard.
 Ultem is a registered trademark of General Electric.
 8420 (0713)

www.bullard.com