



The SceneCatcher 2.0 is compatible with the following operating systems:

Windows 7
Windows 7 x64
Windows Vista
Windows Vista x64
Windows XP
Windows XP x64

Attaching the SceneCatcher

The Bullard Thermal Imager (TI) can be equipped with an optional SceneCatcher digital video recorder. The SceneCatcher is housed in a convenient handle. To attach the handle to the TI, simply align the handle so the handle brackets cradle the TI just under the display and the electrical contacts on the handle align with corresponding contacts on the TI (**Figure 1**). Turn the thumbscrew until it is tightened and the handle is fully secure. To disconnect the SceneCatcher handle, loosen the thumbscrew and remove the handle from the thermal image.

NOTE

The electrical contacts on the TI that connect with the SceneCatcher may require periodic cleaning. To clean these contacts, use soapy water and a non-abrasive cloth or a cotton swab and isopropyl alcohol. Rubbing a pencil eraser on the contacts is another effective, non-abrasive means to clean the contacts.

Using the SceneCatcher

The SceneCatcher is powered via the TI's 10-Volt NiMH rechargeable battery, while the TI is powered on. It functions through the use of one button only. The button, or Momentary Switch, located on the left outer circle of the pistol grip handle controls both image and video capture (**Figure 2**). The download feature, which allows image and video to be downloaded to a computer, is functional only when the SceneCatcher is powered on and connected through a USB cable. The USB port is located on the front right side of the handle (**Figure 3**).

SceneCatcher Only Mode: When the SceneCatcher is attached to the TI and powered on, the unit will perform a six second calibration sequence after which the LED indicator will illuminate green. No function of the SceneCatcher has yet been initiated. The solid green LED indicates the Standby/Ready mode.

To engage the Image Capture Mode, begin with a solid green LED. Depress the Momentary Switch for less than one second. The green SceneCatcher LED will turn red while the image is being generated, and then it will return to green (ready mode) when the SceneCatcher has completed generating the image.

To engage the Video Capture Mode, begin with a solid green LED. Depress the Momentary Switch for more than two seconds. The green SceneCatcher LED will produce an alternating green/red flash (approximately one flash per second) while the video is being generated. Press the Momentary Switch again to disable the video capture mode. The SceneCatcher LED will return to green

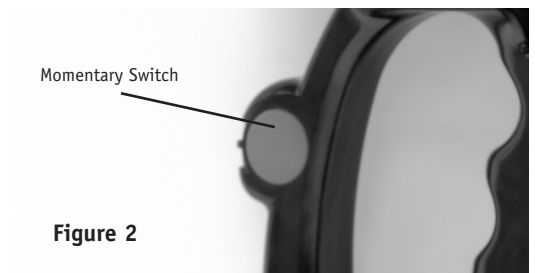
(ready mode) when the SceneCatcher has completed capturing the video.

SceneCatcher Low Memory Mode: When the SceneCatcher memory storage capacity is low, the LED indicator will flash red. No function of the SceneCatcher has yet been initiated. The flashing red LED indicates the standby/ready mode with low memory. To free up additional space on the SceneCatcher, copy images and videos to a PC and delete them from the SceneCatcher.

When memory capacity has been reached, the SceneCatcher LED will illuminate solid red to indicate the memory is full.

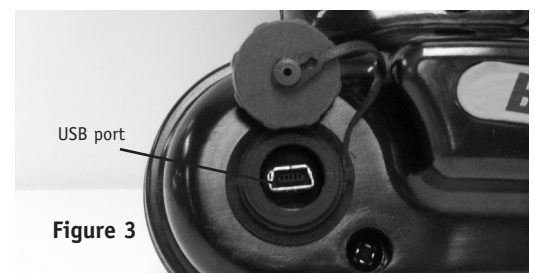


Figure 1



Momentary Switch

Figure 2



USB port

Figure 3

Installing the SceneCatcher Software

With the SceneCatcher powered on, connect the USB cable to the port on the SceneCatcher and to a PC.

Upon connection, after a few seconds a window will appear as seen in **Figure 10** or **Figure 11**.

Windows XP Users:

Double-click Launch Bullard SceneCatcher Setup. You will be prompted with a "Run As" window as seen below. Confirm that the checkbox below 'Current user' is unchecked and then click "OK". When complete, move on to **Figure 6 - Welcome**.

Figure 4



Windows Vista Users:

Double-click Launch Bullard SceneCatcher Setup. You may then be prompted with a message confirmation to run the program "Setup.exe". If so, select "Run Setup.exe" and continue. When complete, move on to **Figure 6 - Welcome**.

Windows 7 Users:

Double-Click "Open folder to view files" as seen in **Figure 11**. Then double-click "BullardSceneCatcher" as seen in **Figure 5**. You may then be prompted with a message confirmation to run the program "Setup.exe". If so, select "Run Setup.exe" and move on to **Figure 6 - Welcome**.

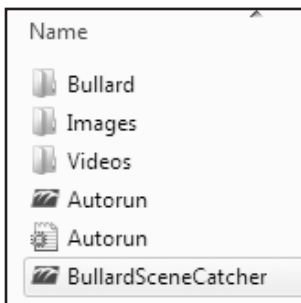


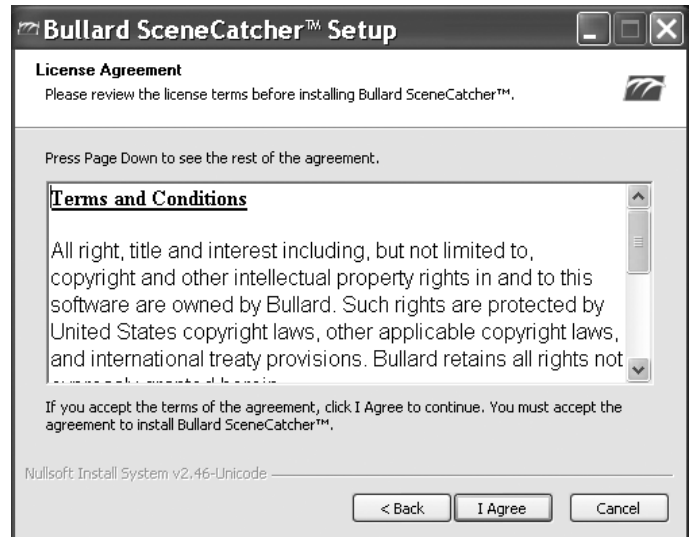
Figure 5

Figure 6 - Welcome



Click "Next".

Figure 7 - License Agreement



To accept the license agreement terms and conditions, click "I agree".

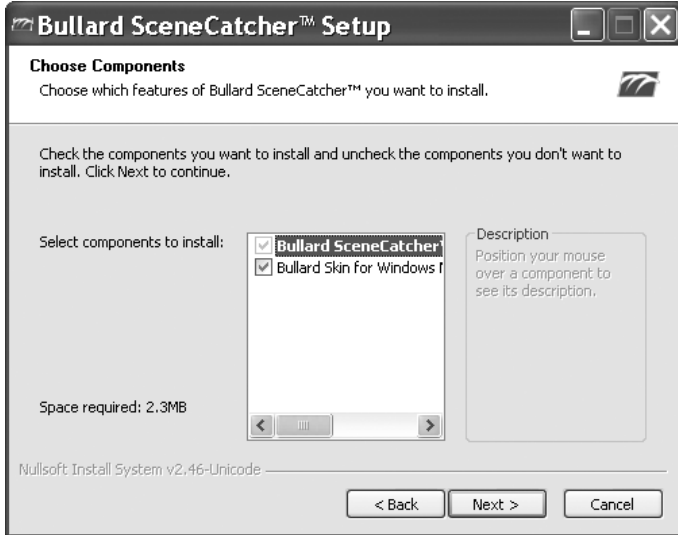
NOTE

If you do not click "I agree", the SceneCatcher software installation will abort, and you will not be able to access images and videos.

SceneCatcher™ Digital Video Recorder Version 2.0 User Manual

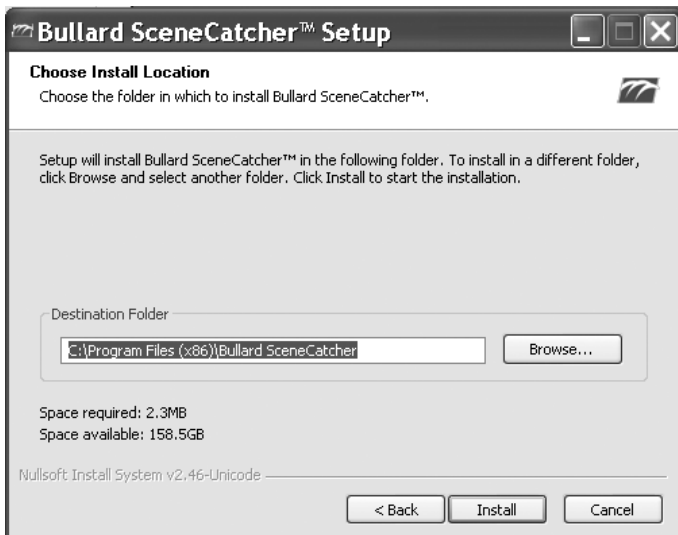
for the Bullard T3 series, T4 and TacSight Series Thermal Imagers

Figure 8 - Choose Components



By default, the SceneCatcher program will install. You can deselect the Bullard Media Player skin if you do not want to install it. When the options you want are selected, click "Next" (Figure 8).

Figure 9 - Choose Location



You can use the default directory for the SceneCatcher software or change the location by selecting "Browse" and navigating to another directory. When the location you want is selected, click "Install" (Figure 9). When installation is complete, click "Finish".

Using the SceneCatcher software

If not already connected, with the SceneCatcher powered on, connect the USB cable to the port on the SceneCatcher and to a PC. Upon connection, a Windows selection menu prompt appears.

Figure 10 - Windows XP and Vista Selection Menus




Figure 11 - Windows 7 Selection Menu



Using and managing files

From this menu, you can open the folder containing the videos and images, play or view files using the default media player or editor, and transfer files. You can copy, cut, and/or paste files located on the SceneCatcher to your PC for archiving. Consult your PC's Windows documentation for further information on how to view, play, and manage image and video files.

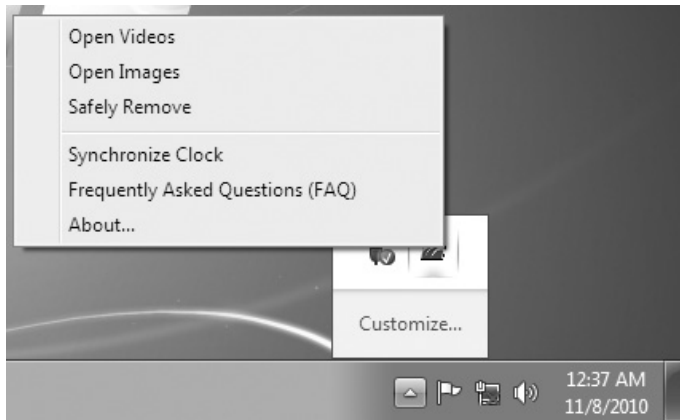
Additional software features:

The SceneCatcher software installs in the system tray in Windows. The system tray is usually located in the bottom right corner of your PC's display and contains an assortment of system and software icons. The SceneCatcher software will be shown as a green Bullard logo icon "  " and will display "Bullard SceneCatcher" when rolling over the icon with your mouse. To access software features, right click the icon and select the feature from the SceneCatcher menu.

NOTE

You may need to expand the system tray to see the Bullard icon. To do this, click "Show hidden icons" in your Windows system tray.

Figure 12 - Bullard Icon Right Click Menu



From the SceneCatcher Menu, you can:

- Open Videos
- Open Images
- Safely Remove the SceneCatcher
- Synchronize Clock
- Read Frequently Asked Questions (FAQs)
- Access Device Information

Open videos: Opens the directory on the SceneCatcher containing videos.

Open Images: Opens the directory on the SceneCatcher containing images.

Safety Remove: Enables safe removal of the SceneCatcher from the PC in order to protect against data loss.

Synchronize Clock: Updates the SceneCatcher internal clock by synchronizing it to the PC's clock.

Frequently Asked Questions (FAQs): Provides answers to frequently asked SceneCatcher questions.

About: Displays SceneCatcher Version information.

Warranty

Bullard warrants to the original purchaser that the SceneCatcher Digital Video Recorder is free of defects in materials and workmanship under normal use and service for a period of one year from the date of purchase. Bullard's obligation under this warranty is limited to repairing or replacing, at Bullard's option, articles that are returned within the warranty period and that, after examination, are shown to Bullard's satisfaction to be defective, subject to the following limitations:

- Article must be returned to Bullard with shipping charges prepaid.
- Article must not be altered from its original configuration.

In no event shall Bullard be responsible for damages, loss of use, or other indirect incidental, consequential or special costs, expenses, or damages incurred by the purchaser, notwithstanding that Bullard has been advised of the possibility of such damages.

ANY IMPLIED WARRANTIES, INCLUDING WARRANTIES OF MERCHANTABILITY AND FITNESS FOR A PARTICULAR PURPOSE, ARE LIMITED IN DURATION TO TWO YEARS FROM THE DATE OF PURCHASE OF THIS PRODUCT.

Service

Should your SceneCatcher require service, simply call Bullard Customer Service at 877-BULLARD (877-285-5273) to request a return authorization. Please have the SceneCatcher serial number available. The serial number is located on the top of the handle between the electrical contacts.

Americas:
E.D. Bullard Company
1898 Safety Way
Cynthiana, KY 41031-9303
Toll free: 877-BULLARD (285-5273)
Tel: 859-234-6616
Fax: 859-234-8987
www.bullard.com

Europe:
Bullard GmbH
Lilienthalstrasse 12
53424 Remagen • Germany
Tel: +49-2642 999980
Fax: +49-2642 9999829
www.bullardextrem.com

Asia-Pacific:
Bullard Asia Pacific Pte. Ltd.
LHK Building
701, Sims Drive, #04-03
Singapore 387383
Tel: +65-6745-0556
Fax: +65-6745-5176
www.bullard.com



©2010 Bullard. All rights reserved.
Bullard® is a registered trademark of Bullard.
Windows XP, Windows Vista and Windows 7 are trademarks of Microsoft®.